

IMPORTANT SAFEGUARDS

When using electrical equipment, basic safety precautions should always be followed including the following:

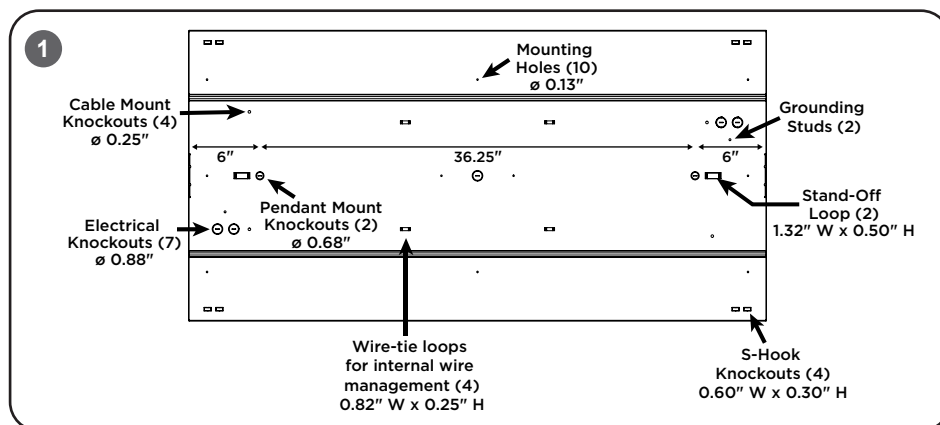
READ AND FOLLOW ALL SAFETY INSTRUCTIONS

- DANGER**- Risk of shock- Disconnect power before installation.
DANGER – Risque de choc – Couper l'alimentation avant l'installation.
- This luminaire must be installed in accordance with the NEC or your local electrical code. If you are not familiar with these codes and requirements, consult a qualified electrician.
Ce produit doit être installé conformément à NEC ou votre code électrique local. Si vous n'êtes pas familier avec ces codes et ces exigences, veuillez contacter un électricien qualifié.
- Do not install insulation within 3 inches (76 mm) of any part of the luminaire.
Ne pas mettre l'isolant à moins de 76 mm (3 po) de toute partie du luminaire.
- Access above ceiling required.
Acces requis au-dessus du plafond.
- Suitable for Damp Locations.
Convient aux emplacements humides.
- Suitable for suspended ceilings.
Convient aux plafonds suspendus.

SAVE THESE INSTRUCTIONS FOR FUTURE REFERENCE

- The Surface Mount Kit is designed for use with CR Series Troffers for surface or suspended mounting.
- The following are not provided: conduit, cable, fittings, terminal blocks and wire connectors.

TO INSTALL:



INSTALL BASE HOUSING ON TO SURFACE OR SUSPEND FROM CHAIN:

STEP 1:

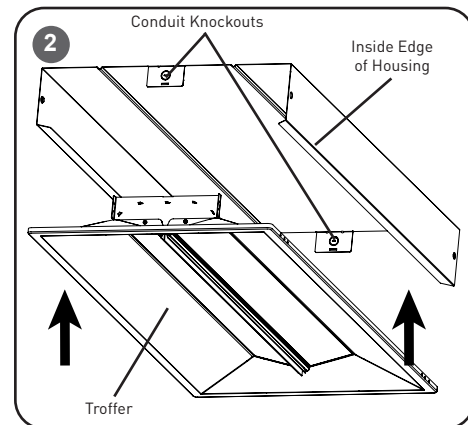
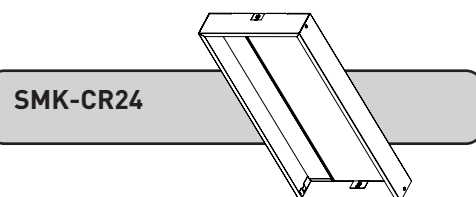
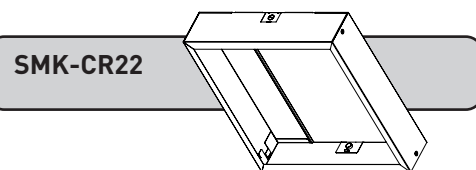
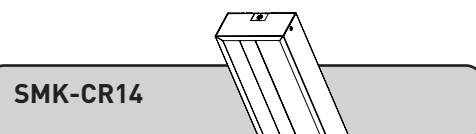
For all mounting features and wiring access points see **Figure 1**.

NOTE: Distance between the two Pendant Mount Knockouts for SMK-CR24 and SMK-CR14 is 36.25", and 6" from each edge. The distance between the two Pendant Mount Knockouts for SMK-CR22 is 15", and 5" from each edge.

STEP 2:

Attach ground wire lead to grounding stud of your choice using included ground nut.

INSTALLATION INSTRUCTIONS INSTRUCTIONS D'INSTALLATION



INSTALL CR SERIES TROFFER INTO BASE HOUSING:

STEP 1:

For CR-B Series Luminaires With Emergency Backup (EB):

Remove [1] conduit knockout at the chosen end of the base housing [See **Figure 2**] and install emergency test switch from luminaire into conduit opening. Test switch is held in place using 3/4" nut supplied with test switch. Test switch adapter is not needed when using SMK. **NOTE:** Make sure luminaire is oriented such that test switch conduit from luminaire will reach chosen knockout.

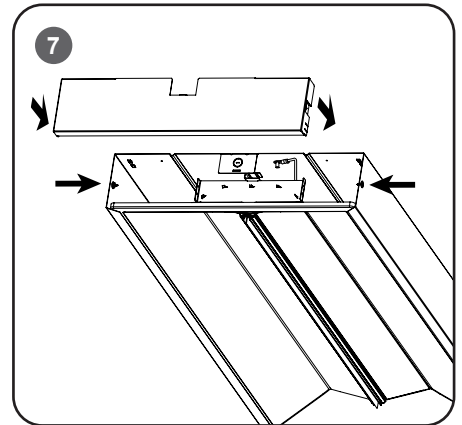
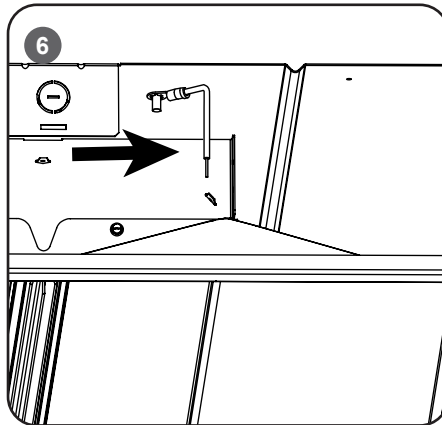
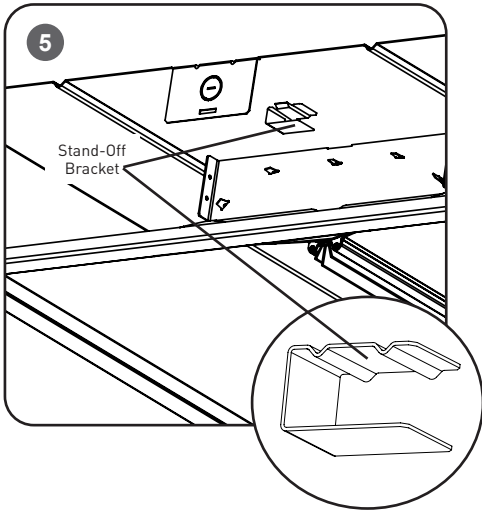
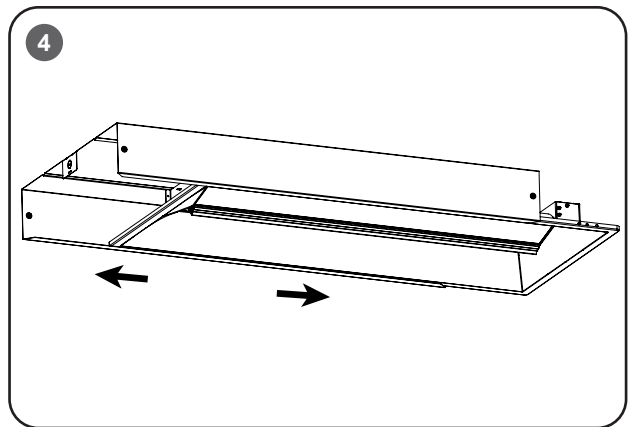
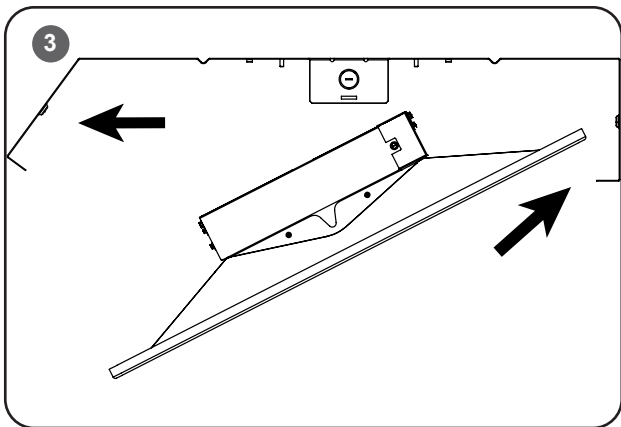
For CR-B Series Luminaires Without Emergency Backup (EB) and All Other CR Series Luminaires:

Proceed to STEP 2.

STEP 2:

Place one edge of CR Series Troffer on inside edge of housing. See

Figure 2.



STEP 3:

Pull housing side wall outward. Rotate troffer into housing. See **Figure 3**.

STEP 4:

Route all AC wires through knockouts and attach to CR Series Troffer leads as indicated in the installation instructions included with the CR Series Troffers. Dress wires using zip-ties (not provided) through loops where indicated above.

INSTALL STAND-OFF BRACKETS AND GROUND WIRE:

STEP 1:

Slide the CR Series Troffer to either end of the housing to expose the stand-off loop. See **Figure 4**.

STEP 2:

Install stand-off brackets by sliding the tab with the detent bumps into the receiving loop. See **Figure 5**.

STEP 3:

Install ground wire with the (8-32) star nut (provided). See **Figure 6**.

INSTALL END CAPS:

STEP 1:

Install an End Cap on each end to complete the enclosure and secure with (2) sheet metal screws each. See **Figure 7**.