

CREE TEST REPORT FOR INGRESS PROTECTION (IP)

Page 1 of 3

Product Model Number: XCC LOW COST CANOPY Test #: 6515Q

Product Description: SAMPLE #2 FROM TEST "P". IP66 TEST WITH LIGHT GREASE ON FOAM-N-PLACE. NO SENSOR. RAN AT 700mA, 350mA AT THE LED'S.

Product Configurations: MOUNTED TO EXPANDED METAL OVER J-BOX. SEALED AROUND J-BOX AND MOUNTING SCREWS WITH SILICONE.

Driver Manufacturer: Philips Driver Catalog #: 929000702202

Applicable Specifications: IEC 60598-1 Edition 7.0

Test Results: (Based on Applicable Compliance Specification acceptance criteria.)**Dust Test IP6X:** ☒ Pass ☐ Fail ☐ NA Test Performed By: BRETT ROMANOWSKI

Screw or Cord Gland Location	Screw Diameter or Cord Gland ID	Number of Screws	Torque Applied

Start Date: 6/11/2013 Start Time: 15:20 Operational Test Duration: 16 HOURS 30 MINUTES

Chamber Start Date: 6/12/13 Start Time: 7:50 Chamber Test Duration: 3 HOURS 5 MINUTES

Hypot Test Voltage: 1.96 kV Hypot Test Value: 4.39 mA Hypot test Duration: 60 sec

Input Voltage: 120.1 Volts Comments: NO SIGN OF TALCUM DEPOSITS.

Humidity: 41.8 %

Air Temp: 23.5 °C

Pressure: 986.7 mbar

Equipment ID #: 3213 3262 3098 3133 3246 8028

Cal. Due Dates: N/A 3/25/14 12/19/13 12/20/13 2/1/14 2/19/14

Equipment ID #:

Cal. Due Dates:

Wet Test IPX6: ☒ Pass ☐ Fail ☐ NA Test Performed By: KEVIN ARNDT

Screw or Cord Gland Location	Screw Diameter or Cord Gland ID	Number of Screws	Torque Applied

Start Date: 6/10/2013 Start Time: 4:40 Operational Test Duration: 15 HOURS 40 MINUTES

Product Tested Date: 6/11/13 Start Time: 8:20 Test Duration: 3 MINUTES

Hypot Test Voltage: 1.96 kV Hypot Test Value: 4.07 mA Hypot test Duration: 60 sec

Input Voltage: 120.1 Volts Comments: NO WATER ENTRY

Water Temp: 16.8 °C

Humidity: 47.7 %

Air Temp: 22.8 °C

Pressure: 987.7 mbar

Equipment ID #: 3212 3183 3243 3261 3206 3050 3006

Cal. Due Dates: 2/19/14 5/7/14 12/21/13 2/19/14 5/8/14 6/21/13 3/25/14

Equipment ID #: 3128

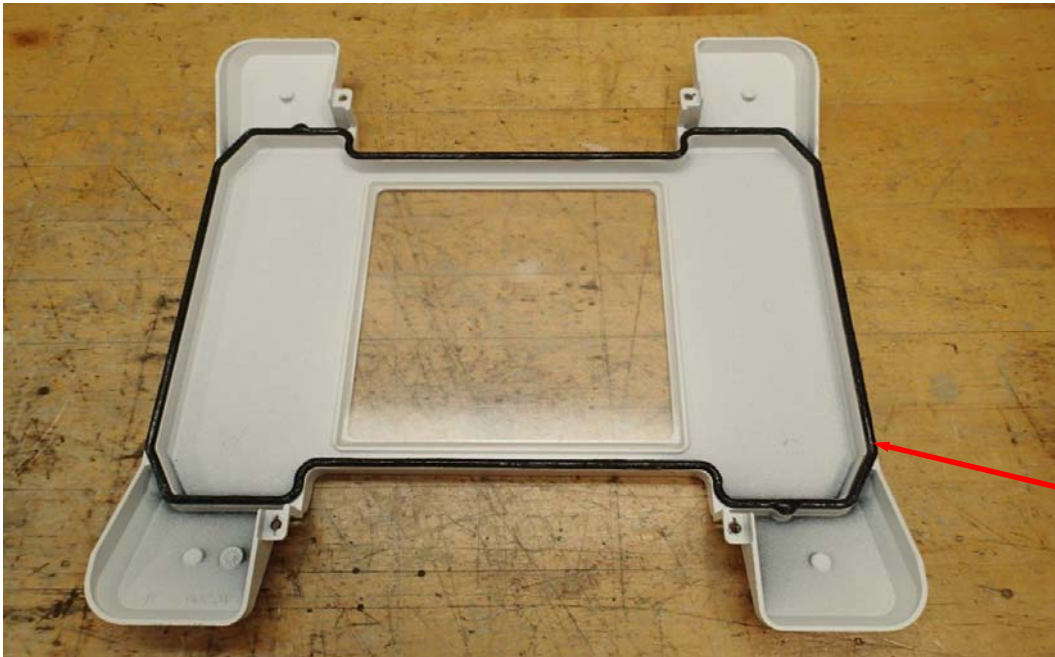
Cal. Due Dates: 3/28/14

Product Model Number: XCC LOW COST CANOPY

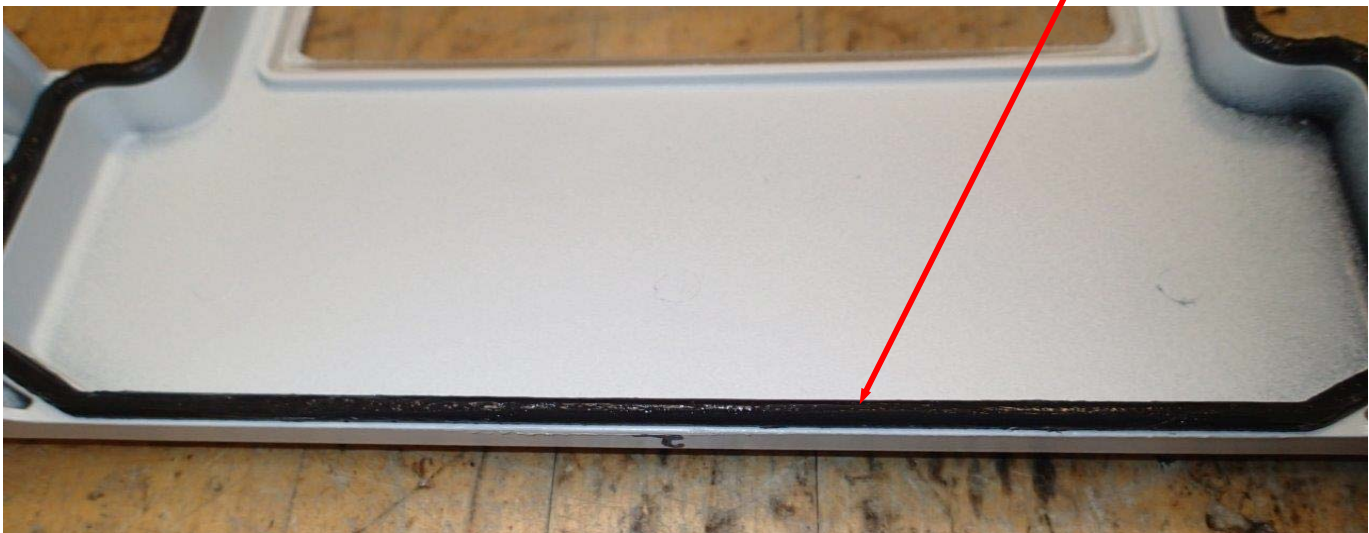
Test #: 6515Q



WET TEST



LIGHT
GREASE



Product Model Number: XCC LOW COST CANOPY

Test #: 6515Q



DUST TEST