

C-STRIP-B-SCCT Series

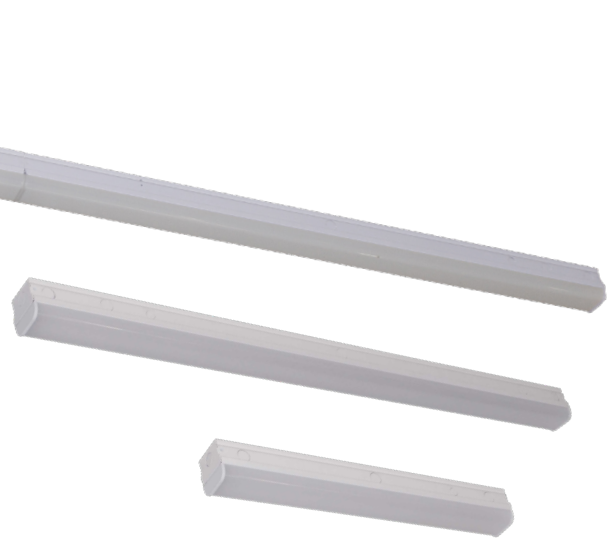
Linear LED Strip Light with Field Selectable CCT and Wattage

Replaces up to 2-lamp 54W T5HO

C-LITE
LED LIGHTING

THREE FIXTURES; ONE LINEAR STRIP

Select your savings with our cULus Listed LED Linear Strip Lights in 2-, 4-, and 8-foot lengths. Achieve your desired performance with field switchable CCTs from 3000K, 4000K, or 5000K; and select your wattage, with up to 3 lumen outputs. Each comes with a 5-year limited warranty, and a variety of available accessories.



PRODUCT SPECIFICATIONS

OVERVIEW

- Max. Delivered Lumens: 2635 (**\$26L**); 5650 (**\$56L**); 8845 (**\$88L**)
- CRI: ≥ 80
- CCT: Selectable 3000K/4000K/5000K
- Input Power: 20W (**\$26L**); 15W/30W/45W (**\$56L**); 32W/48W/64W (**\$88L**)
- Dimmable: 0-10V to 10%
- Operating Temperature Range:
 - (2ft. & 4ft. w/out EB): -40°F to 113°F (-40°C to 45°C)
 - (4ft. w/EB): 32°F to 113°F (0°C to 45°C)
 - (8 ft. w/out EB): -40°F to 104°F (-40°C to 40°C)
 - (8 ft. w/EB): 32°F to 104°F (0°C to 40°C)
- Estimated L₇₀ Lifetime @ 25°C (77°F): >100,000 hours
- Limited Warranty: 5-Years*
- Replaces: 2 x F17T8 (**\$26L**); 1 x F54T5HO (**\$56L**); 2 x F54T5HO (**\$88L**)

FEATURES	RECOMMENDED USE	INPUT VOLTAGE
<ul style="list-style-type: none">• FCC Part 15, Subpart B, Class A limits for conducted and radiated emissions• Field selectable color temp and light output• Integrated 90-minute emergency driver option available• Surge protection comes standard: 2kV (2-foot and 8-foot), 4kV (4-foot)	<ul style="list-style-type: none">• Industrial• Commercial• Offices• Retail• Residential• Manufacturing	<ul style="list-style-type: none">• Universal (120-277V Operation)

CERTIFICATIONS:



CA RESIDENTS WARNING: Cancer and Reproductive Harm –
www.p65warnings.ca.gov



C-STRIP-B-SCCT SERIES

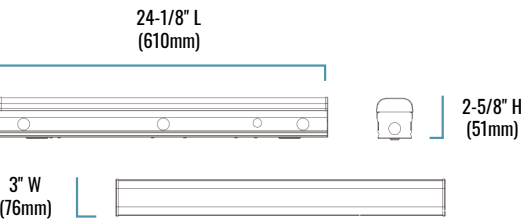
ORDERING INFORMATION

Example SKU: C-STRIP-B-LIN4-S56L-SCCT-UL-WH-EB

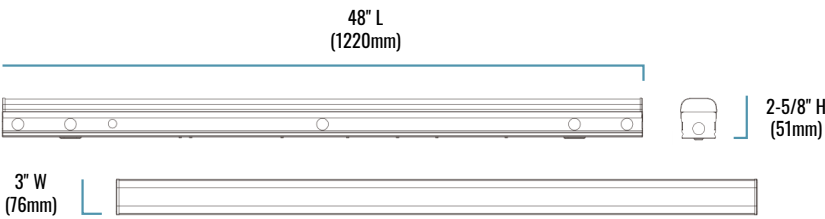
C-STRIP	B			SCCT	UL	WH	
PRODUCT	SERIES	STYLE	LUMEN PACKAGE	SELECTABLE CCT'S	VOLTAGE	HOUSING COLOR	EMERGENCY BACKUP OPTION
C-STRIP	B	LIN2 2-foot LIN4 4-foot LIN8 8-foot	S26L 2630 Lumens (20W)* S56L 2950 Lumens (22W)* 4420 Lumens (33W)* 5650 Lumens (45W)* S88L 4520 Lumens (33W)* 6850 Lumens (50W)* 8840 Lumens (64W)*	SCCT 3000K, 4000K, 5000K	UL Universal 120-277V Operation	WH White	[blank] w/o Emergency backup option EB Emergency Battery Back Up - Provides 90 minutes of emergency operation. - 4' provides 4W and 90 min- utes of emergency operation - 8' provides 8W and 90 min- utes of emergency operation

*Lumen values are measured at 4000K.

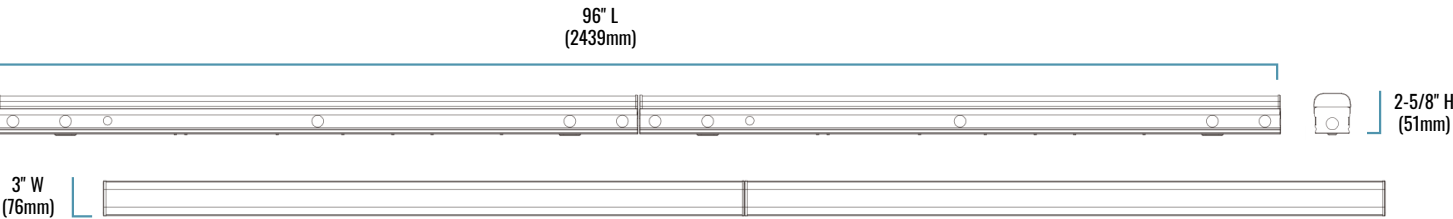
S26L



S56L



S88L



SERIES OVERVIEW

DIMENSIONS	PRODUCT WEIGHT	MOUNTING HEIGHT	SPACING
(S26L): 24-1/8" L x 3" W x 2-5/8" H	2.05 lbs.	10-15 feet	End to end, or 1 to 1-1/2 times the mounting height
(S56L): 48" L x 3" W x 2-5/8" H	3.76 lbs., (w/o EB) 4.12 lbs. (w/EB)		
(S88L): 96" L x 3" W x 2-5/8" H	8.02 lbs., (w/o EB) 8.38 lbs. (w/EB)		

C-STRIP-B-SCCT SERIES

FIXTURE SPECIFICATIONS

HOUSING	High quality steel with white polyester powder coat finish. 3mil thickness for superior corrosion resistance and maximum environmental durability
LENS ASSEMBLY	Frosted polycarbonate diffuser lens for superior light uniformity and glare reduction
MOUNTING	Keyhole slots for surface mounting or suspended mounting using hook and chain (sold separately)

LUMINAIRE AND ELECTRICAL PERFORMANCE

OPERATING TEMPERATURE RANGE	ESTIMATED L ₇₀ LIFETIME @ 25°C (77°F)	POWER FACTOR	TOTAL HARMONIC DISTORTION
(2ft. & 4ft. w/out EB): -40°F to 113°F (-40°C to 45°C) (4ft. w/EB): 32°F to 113°F (0°C to 45°C) (8 ft. w/out EB): -40°F to 104°F (-40°C to 40°C) (8 ft. w/EB): 32°F to 104°F (0°C to 40°C)	>100,000 Hours	>.9	<20%


SKU	REPLACES	LUMEN OUTPUT	SYSTEM WATTS	CURRENT DRAW (AMPS)			
				120V	208V	240V	277V
C-STRIP-B-LIN2-S26L-SCCT-UL-WH	2-Lamp F17T8	2600L	20W	0.160	0.092	0.080	0.069
C-STRIP-B-LIN4-S56L-SCCT-UL-WH	1-lamp T5H0	5600L	15W/30W/45W	0.351	0.202	0.175	0.152
C-STRIP-B-LIN4-S56L-SCCT-UL-WH-EB							
C-STRIP-B-LIN8-S88L-SCCT-UL-WH	2-lamp T5H0	8800L	32W/48W/64W	0.544	0.314	0.272	0.235
C-STRIP-B-LIN8-S88L-SCCT-UL-WH-EB							

WARRANTY AND CERTIFICATIONS

WARRANTY	cULus LISTED	DLC
5-Year-Limited*	Damp Locations	5.1 Standard

C-STRIP-B-SCCT SERIES

ACCESSORIES

	PIR MOTION SENSOR 120-277V
	<p>SKU: C-ACC-B-PIR-UL</p> <p>USE: Contains two lenses; recommended mounting heights: low bay (8-25 feet), high bay (20-40 feet). Mounts to side knock out on fixture.</p>

© 2024 Cree Lighting USA LLC. All rights reserved. For informational purposes only. Content is subject to change.
Patent www.creelighting.com/patents. C-Lite and the C-Lite logo are registered trademarks of Cree Lighting. The cULus logo is a registered trademark of UL LLC. The DLC QPL logo and the DLC QPL Premium logo are registered trademarks of Northeast Efficiency Partnerships, Inc.

